

# CAMENGO

EDITEUR



In 2015, Camengo is presenting two worlds, Almora and Ondine - serenity radiated by plants... and flowers

The Almora collection opens up to the environs of the Equator -where the body abides but sensibility can soar. A suggestion of a palm-leaf on cotton and linen, a few drops of dew in satin stitch embroidery - a journey to an inner land, a home reborn with optimistic, gentle tranquillity.

The intensity of watercolours blends with the tenderness of the pigments. Botanical greens, horizon blues, dawn fuchsias and powdered argils... colours exploring distant lands.

Then beyond these uncharted territories, sensuality welcomes us, and the mind comes to rest in a precious garden : Ondine.

Gently rocked by a charismatic, enveloping atmosphere, through lush embroidered details Ondine's flowers and ornamentation illuminate a charming contemporary residence. Linen, eternal pinks, ashen beiges and mineral blues imbue this interior with a breath of grace and delicacy. All in complete harmony.

An inner journey. A voyage of the senses.

## PR CONTACT

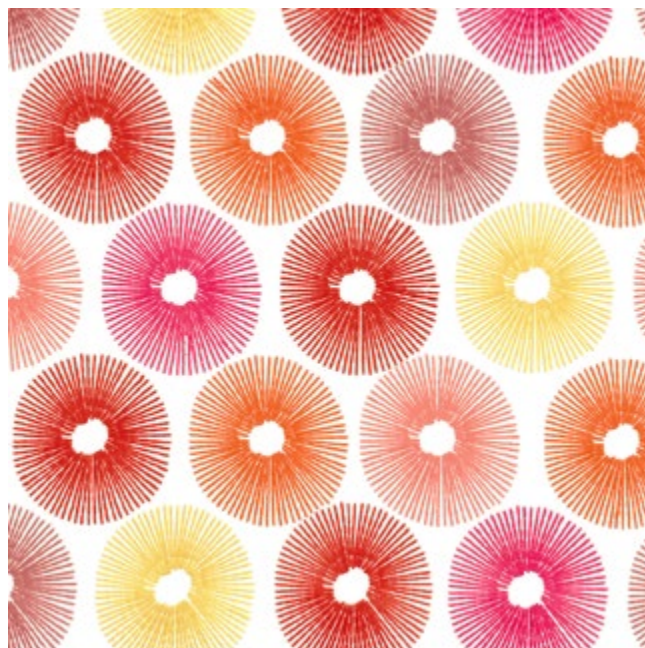
Nathalie Ducoulombier

+33 (0)6 23 03 09 49 - n.ducoulombier@casamance.com

[www.camengo.com](http://www.camengo.com)

# CAMENGO

EDITEUR



## EXOTIQUE

Exotique deploys its equinoctial floral calyx. Thick cotton embroidery, harmony in the swirls and colours - equatorial fuchsias, lagoon blues, lime greens, and powdered argils - for optimism and gentleness at the heart of a multi-coloured drape.

—

Collection Almora Designs

100% cotton – *polyester embroidery*

Width 134 cm

3 colours



3547 01 10   3547 02 12   3547 03 14

### PR CONTACT

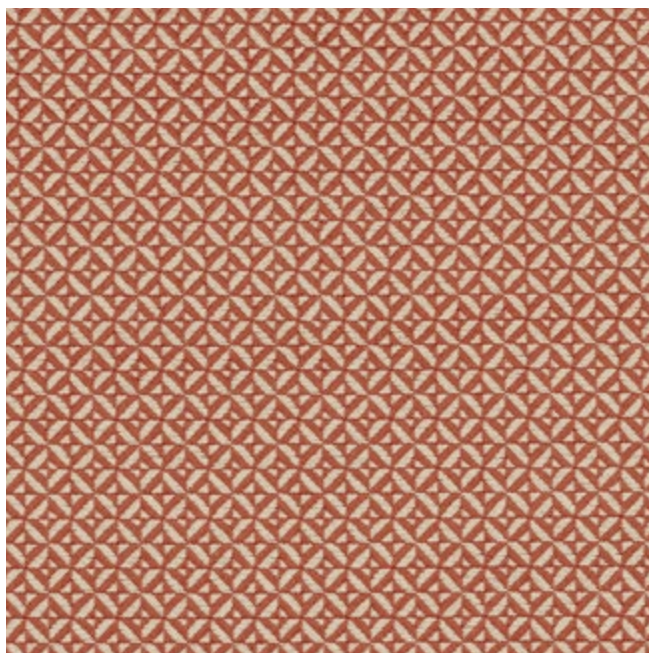
Nathalie Ducoulombier

+33 (0)6 23 03 09 49 - [n.ducoulombier@casamance.com](mailto:n.ducoulombier@casamance.com)

[www.camengo.com](http://www.camengo.com)

# CAMENGO

EDITEUR



## PÉNINSULE

A small geometric pattern whispers a two colour rhythm - the carbon, mineral, botanical or floral dominant converses with lighter, white or natural tones.

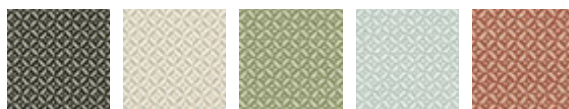
—

### Collection Almora Designs

97% cotton – 3% polyester

Width 136 cm

5 colours



3550 01 34 3550 02 36 3550 03 38 3550 04 40 3550 05 42

### PR CONTACT

Nathalie Ducoulombier

+33 (0)6 23 03 09 49 - n.ducoulombier@casamance.com

[www.camengo.com](http://www.camengo.com)

# CAMENGO

EDITEUR



## HESPERIDES

Embroidery blooming in floral harmony : the Hespérides, are these flowers. In the heart of a precious garden, their petals dictate a gentle, soothing rhythm of colour. Stylized delicacy on a cotton satin background.

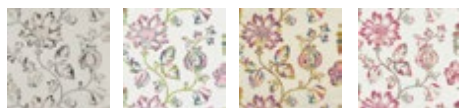
—

Collection Ondine designs

100% cotton – *viscose embroidery*

Width 130 cm

4 colours



3554 01 01 3554 02 03 3554 03 05 3554 04 07

### PR CONTACT

Nathalie Ducoulombier

+33 (0)6 23 03 09 49 - [n.ducoulombier@casamance.com](mailto:n.ducoulombier@casamance.com)

[www.camengo.com](http://www.camengo.com)

# CAMENGO

EDITEUR



## LAGUNE

Aqua greens, dawn fuchsias, powdered pinks, and ashen beiges infused with the very heart of the fibre ennobled by delicate and subtle digital printing. A delicate fall for a linen voile with harmonious colour gradients.

—

### Collection Almora Designs

100% linen

Width 278 cm

4 colours



3548 01 16   3548 02 18   3548 03 20   3548 04 22

### PR CONTACT

Nathalie Ducoulombier

+33 (0)6 23 03 09 49 - [n.ducoulombier@casamance.com](mailto:n.ducoulombier@casamance.com)

[www.camengo.com](http://www.camengo.com)